

STUDY ENGLISH IN HAWAII



www.cpchawaii.edu

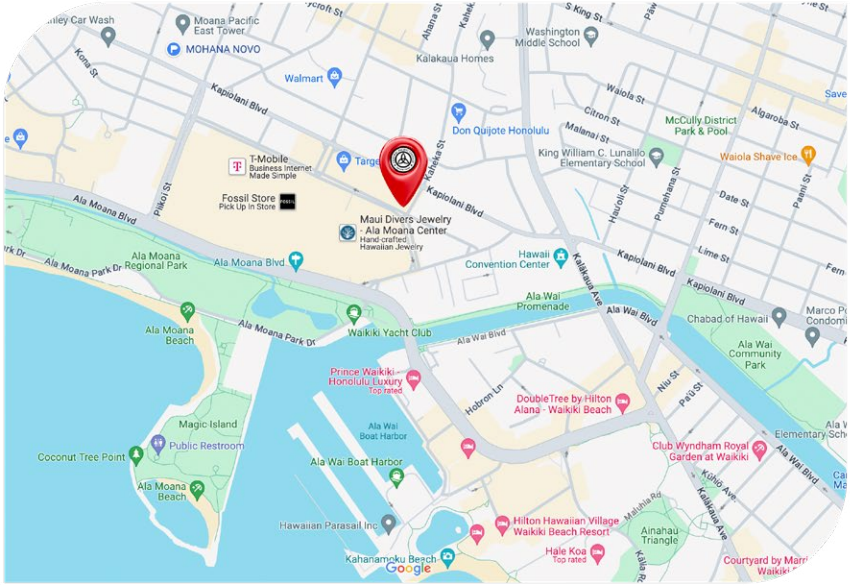
1585 Kapiolani Blvd. Suite 1705, Honolulu, HI 96714 (New location from January 2025)
Phone: (808) 791-7800 • info@cpchawaii.edu



WELCOME TO

HAWAII!

CPC is located in beautiful and urban Honolulu, Hawaii. We are five minutes away from Ala Moana Beach and world famous Ala Moana Shopping Center. A diverse array of restaurants and cafes are steps away from CPC!



CONTACT US:

Tel : 808-791-7800
Fax: 808-748-0897
info@cpchawaii.edu
Web-site: www.cpchawaii.edu

1585 Kapiolani Blvd. Suite1705,
Honolulu, HI 96714
(New location from January 2025)





"I like the teachers. I feel at home, so comfortable. I'm feeling happy."

"It's a good school and you can improve your English very fast. For me, it's all perfect."

CAROLINA, BRAZIL



"My teacher is the best for me because CPC has a lot of good, awesome teachers."

"I like conversation. CPC has a lot of speaking time. And sometimes can join and play game. Good balance. I like it."

MAI, JAPAN

WHY CENTRAL PACIFIC COLLEGE?

- Friendly and ohana like (family in Hawaiian) learning environment that is comfortable for students of all ages and backgrounds.
- Strong emphasis on academic quality and development of different competencies (i.e., language, social, cultural, reflective) in order to encourage students to become confident, global communicators.
- Courses focus on learning English using can-do goals rather than being textbook-driven.
- A curriculum that "works" - when students leave CPC, they can use English in a variety of social and professional circumstances.
- CPC strives to provide Personalized Care with an Individualized Learning Plan and one-on-one meetings with instructors and Director of Studies.

ACCREDITATIONS



Accredited by ACCET - A Partnership for Quality®

CERTIFICATION / ASSOCIATION



PROGRAMS WE OFFER

ENGLISH PROFICIENCY PROGRAM (EPP) & SHORT-TERM ENGLISH PROGRAM (STEP)

The EPP and STEP programs have eight different levels. EPP students must be enrolled for one full term to complete a level.

- **True Beginner level:**

This level familiarizes learners with new sounds, simple vocabulary, and basic concepts of English grammar.

- **Beginner level:**

This level provides learners with the foundational skills needed to participate in basic English conversation.

- **High Beginner level:**

This level encourages learners to further expand the development of basic conversation and grammar skills.

- **Low Intermediate level:**

This level emphasizes the use of practical grammar and conversational structures needed to participate in everyday discussions in English.

- **Intermediate level:**

This level focuses on enhancing and improving students' knowledge of complex grammar and conversation structures.

- **Low advanced level:**

This level focuses on developing students' critical thinking skills via interaction with complex grammar structures and high interest discussion topics.

- **Advanced level:**

This level focuses on communicative fluency through development of academic vocabulary and writing skills.

- **Proficiency level:**

This level develops proficiency through high-level test-taking strategies and academic task-based activities.

CONVERSATION PROGRAM

Our program focuses on enhancing your speaking skills in English through engaging activities and interactive learning! In our conversation classes, students will explore a wide range of vocabulary, phrases, and idioms that will make your conversations come alive. You will also be able to practice and fine tune your pronunciation skills. Through fun discussions, role-plays, and group activities, you'll gain confidence in expressing yourself and communicate in an engaging and meaningful way. Our experienced instructors provide a supportive learning environment, guiding you on a journey of language discovery.

Level A: 432 hours / 24 weeks (Two Terms)

This level is designed to familiarize learners with new sounds, simple vocabulary and intonation patterns. Students will find themselves building common phrases in English conversation. The major goal in this level is for students to understand and ask basic questions in order to learn personal details from anyone they come across.

Level B: 432 hours / 24 weeks (Two Terms)

This level is designed to provide learners with the confidence needed to improve their speaking skills. Students will find themselves building a foundation that is needed to participate in spontaneous English conversation. The major goal in this level is for students to understand and hold everyday interactions, especially if they are carried out slowly and clearly.

Level C: 432 hours / 24 weeks (Two Terms)

This level is designed to prepare learners in gaining speaking fluency. Students will find themselves building a foundation by increasing the use of idioms and their mastery of pronunciation. The major goal in this level is for students to understand complex, faster-paced conversations and express themselves using opinions, feelings and emotions.

Level D: 432 hours / 24 weeks (Two Terms)

This level is designed to focus on and emphasize the use of business English. Students will find themselves building a foundation by practicing and learning vocabulary and idioms for professional or personal purposes. The major goal in this level is for students to understand the difference between facts and opinions in not only conversation, but also presentations or lectures. In addition, they will be able to explain and identify key points in an idea or problem with reasonable precision.

ADMISSIONS REQUIREMENTS



The English Proficiency Program (EPP) and the Short-Term English Program (STEP) offer eight levels of study. The student's class level is based on an initial placement test.

- Students who wish to enroll in the the TOEFL® program must have completed at least the Low Intermediate level or placed in the Intermediate score range on the placement test.
- EPP students may begin their program in the 1st, 5th, 9th and 13th week of every term; however, STEP students may enroll any Monday except for holidays weeks (check calendar).
- All EPP and STEP students are engaged in twenty or sixteen hours of study respectively.



FIRST DAY AT SCHOOL

EPP AND STEP PLACEMENT AND ORIENTATION
STEP PLACEMENT AND ORIENTATION

- 1** EPP students and STEP students will have their orientation and placement exam on the Monday afternoon of their first day of classes.
- 2** You will take a placement exam. This exam will help to determine your English level.
- 3** Next, you will watch a PowerPoint presentation that reviews CPC's rules and policies.
- 4** After the orientation presentation, you will complete CPC's enrollment agreement along with our necessary admission documents

SAMPLE DAILY SCHEDULE

EPP: Monday to Friday

STEP: Monday to Thursday

	Monday	Tuesday	Wednesday	Thursday	Friday
9:00 am - 9:50 am	Grammar Use Class 1	Grammar Use Class 1	Grammar Use Class 1	Grammar Use Class 1	Grammar Use Class 1
10:00 am - 10:50 am	Grammar Use Class 2	Grammar Use Class 1	Grammar Use Class 1	Grammar Use Class 1	Grammar Use Class 1
11:00 am - 11:50 am	Integrated Skills Class 1	Integrated Skills Class 2	Integrated Skills Class 2	Integrated Skills Class 2	Integrated Skills Class 2
12:00 am - 12:50 am	Integrated Skills Class 2	Integrated Skills Class 2	Integrated Skills Class 2	Integrated Skills Class 2	Integrated Skills Class 2

Conversation: Monday to Thursday

	Monday & Wednesday		Tuesday & Thursday		
1:10 ~ 2:00 pm	Pronunciation & Accent Reduction	Pronunciation & Accent Reduction	1:10 ~ 2:00 pm	Pronunciation & Accent Reduction	Pronunciation & Accent Reduction
2:05 ~ 2:55 pm	Vocabulary & Idioms 1	Vocabulary & Idioms 1	2:05 ~ 2:55 pm	Vocabulary & Idioms 1	Vocabulary & Idioms 1
3:05 ~ 3:35 pm	Vocabulary & Idioms 2	Vocabulary & Idioms 2	3:05 ~ 3:35 pm	Roleplay & Discussion 1	Roleplay & Discussion 1
3:40 ~ 4:30 pm	Roleplay & Discussion 1	Roleplay & Discussion 1	3:40 ~ 4:30 pm	Roleplay & Discussion 2	Roleplay & Discussion 2
4:35 ~ 5:25 pm	Roleplay & Discussion 2	Roleplay & Discussion 2	4:35 ~ 5:25 pm	Roleplay & Discussion 3	Roleplay & Discussion 3

* The schedule is subject to change.

** Classes are opened based on the number of enrollees.

***Break times are approximate and depends on the class/instructor.



CLUB KEIKI SPRING / SUMMER / WINTER KIDS PROGRAM

This seasonal youth program is for learners from 6-14 years old. Using a unique blend of activities with academics, young learners will be able to improve their English skills while appreciating the breathtaking beauty of Hawai'i.

SAMPLE DAILY SCHEDULE



ACTIVITIES:

8:30 AM - 12:30 PM



LUNCH:

12:30 PM - 1:15 PM



CLASSES:

1:15 PM - 3:45 PM

SAMPLE ACTIVITIES SCHEDULE

WEEK 1

Monday	Tuesday	Wednesday	Thursday	Friday
				
Mini Golf	Honolulu Police Department & Discovery Center	Manoa Heritage Center	Disney's The Little Mermaid	Diamond Head Hike

WEEK 2

Monday	Tuesday	Wednesday	Thursday	Friday
				
Sea Life Park	Ice Skating	Bishop Museum	Fishing	Planetarium & Science Experience

CPC FAMILY PACKAGE

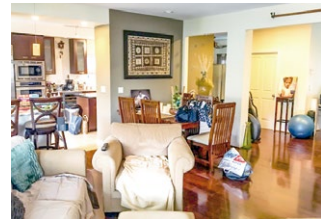
Interested in spending the summer with your family in Hawaii?

Explore Hawaii and learn English with your children!

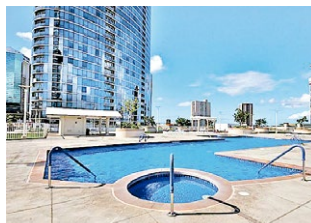
CPC's family package includes enrollment for students ages 6-14 in the Club Keiki Program and for adults in the part-time English Conversation Program.



HOMESTAY PACKAGE



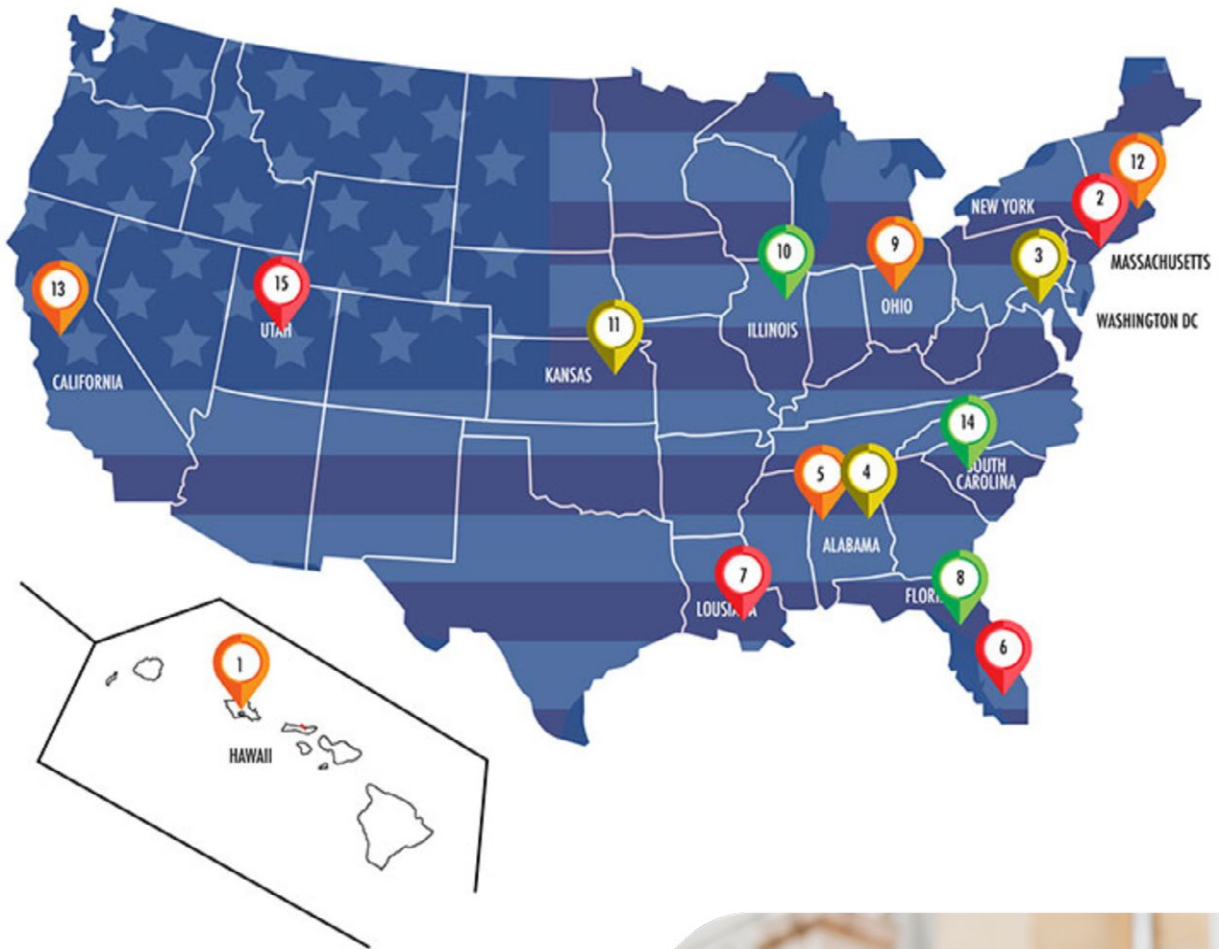
CONDOMINIUM RESIDENCE (SHARED CONDO) PACKAGE



This package includes: Registration fees for one parent and one child, Program fees for one parent and one child, housing placement fee, housing rent fee (including 2 meals per day for homestay; no meals included for condominium), airport pick up and drop off (round trip), and taxes.

- * An additional 5% will be charged for any student over the age of 55.
- * These pictures do not necessarily represent every individual's experience.
- * Housing Services are provided our partner company: Student Services America

GO TO UNIVERSITY



Central Pacific College is now an authorized recruitment representative for 15 universities and colleges across the US. We have staff that can assist students wishing to pursue higher education in the USA.

Students who finish Central Pacific College's proficiency level classes can apply to these Associate's, Bachelor's and Master's degree programs without IELTS or TOEFL upon completion of the university's approved language exam and meeting their academic qualifications.





Kapiolani Community College
Honolulu, Hawaii

Central Pacific College has a special agreement with Kapiolani Community College, an institution part of the University of Hawai'i System, that allows CPC students to transfer directly without the TOEFL/TOEIC. CPC students need to complete the Low Intermediate Level and take the CPC exit test with a score of 51 or higher for admission to Kapiolani Community College.



Adelphi University
Long Island, New York
(Graduate Programs Available)

Adelphi fosters in its students a passion for knowledge, an understanding and questioning of cultural values and a view of themselves as independent, lifelong learners and contributors to knowledge and service in an ever-changing world.



American University
Washington, D.C.
(Graduate Programs Available)

AU offers a broad and flexible choice of majors and minors. Students may double major, construct their own interdisciplinary major, or have their major in one school and a minor in another. AU encourages students to transcend the boundaries of academic disciplines.



Auburn University
Auburn, Alabama
(Graduate Programs Available)

Auburn University is committed to preparing our students for today's global economy. The Office of International Programs site provides information on the international presence of Auburn University such as the Office of International Education, which provides International Student/Scholar immigration advising, study abroad options and more, information on initiatives sponsored by the academic units, and international admissions for undergraduate and graduate students.



Auburn University at Montgomery
Montgomery, AL

Auburn University is committed to preparing our students for today's global economy. The Office of International Programs site provides information on the international presence of Auburn University such as the Office of International Education, which provides International Student/Scholar immigration advising, study abroad options and more, information on initiatives sponsored by the academic units, and international admissions for undergraduate and graduate students.



Florida International University
Miami, Florida

Florida International welcomes students to a diverse, friendly community where industry connections and internship opportunities will help launch their career in a global marketplace. At FIU they'll receive an outstanding education in an entrepreneurial city.



Louisiana State University
Baton Rouge, Louisiana

Earning an LSU degree is an investment in a student's future. LSU offers an exceptional education and opportunities to have a fulfilling but affordable college experience.



University of Central Florida
Orlando, Florida

Students have big dreams. Maybe they want to travel the world, run their own business or hold patents that help save lives. The University of Central Florida will help them get there.



University of Dayton
Dayton, Ohio

The University of Dayton is a top-tier national Catholic research university and the largest private university in Ohio. Founded in 1850 by the Society of Mary (Marianists), the University is characterized by the Marianist educational philosophy of learning in community, welcoming all, serving others, intellectual curiosity and academic rigor to foster servant-leaders who connect learning with leadership and service.



University of Illinois at Chicago
Chicago, Illinois

University of Illinois at Chicago (UIC) broadens educational opportunities for students from across the globe through an emphasis on diversity and providing students with an ethnically and culturally rich learning environment.



The University of Kansas
Lawrence, Kansas

A world of advanced scholarship, invention and discovery, KU provides an education that produces global leaders, business giants and visionaries in many fields, and an undergraduate student experience that will change their life.



University of Massachusetts Boston
Boston, Massachusetts

The UMass Boston is nationally recognized as a model of excellence among urban public research universities. Located on Boston Harbor, it is the metropolitan area's only public research university. UMass Boston's most distinguished intellectual contributions are in the social sciences, education, health and wellness, and the exact sciences. The university is on 120 acres on the Columbia Point peninsula in the city of Boston, Massachusetts, United States.



University of the Pacific
Stockton, California

University of the Pacific is located on a beautiful campus 1.5 hours from San Francisco. In addition to liberal arts, the University has schools of education, engineering and business, and graduate schools in dentistry, law, pharmacy and health sciences. The oldest chartered university in California, Pacific was first in the state to admit women.



University of South Carolina
Columbia, South Carolina

The University of South Carolina is where students prepare to be tomorrow's creative problem solvers who will lead future generations to a healthier, smarter and more vibrant way of life.



University of Utah
Salt Lake City, Utah

The University of Utah is one of the best in the nation at creating startup companies based on student and faculty research. This is indicative of the innovative and industrious thinking found across campus and in 11 classrooms.

CPC ACTIVITIES

Explore Hawaii, learn about local culture and make new friends!

POPULAR CPC WEEKLY ACTIVITIES:

- 🌸 Hiking
- 🌸 North Shore Tour
- 🌸 Sunset Beach Yoga
- 🌸 Hawaiian Food Tour
- 🌸 Beach Day



POPULAR CPC SEASONAL EVENTS:

- 🌸 Halloween Party
- 🌸 Thanksgiving Party
- 🌸 Christmas Party
- 🌸 Easter Egg Hunt
- 🌸 BBQ Party



HAWAIIAN CULTURAL EXPERIENCE

Learning a language in a different place can be challenging for students, as there are many unspoken rules related to culture. At CPC, we value the rich history and relationship culture has with language and recommend various opportunities for our students to take. Students at CPC are highly encouraged to join various activities related to Hawaiian culture.

Disclaimer: These activities are conducted by outside organizations not directly related to CPC. CPC supports students by providing them with registration paperwork for them to attend these activities. Each activity is operated and managed by their own respective group, organization, and business.

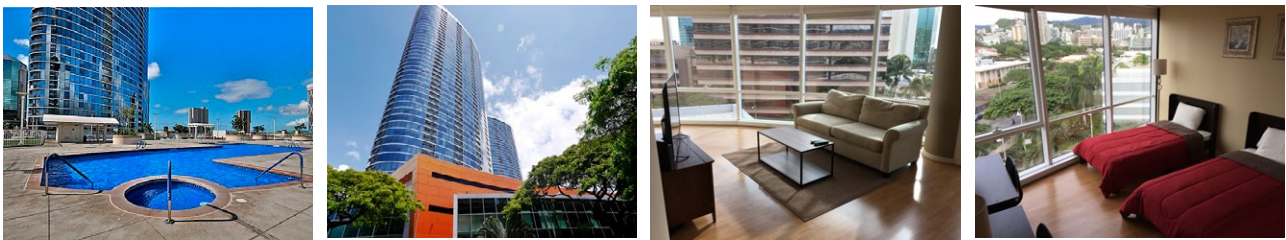
- Hula dance
- Yoga
- Surfing
- Hawaiian quilt



WHERE TO STAY WHILE STUDYING AT CPC?

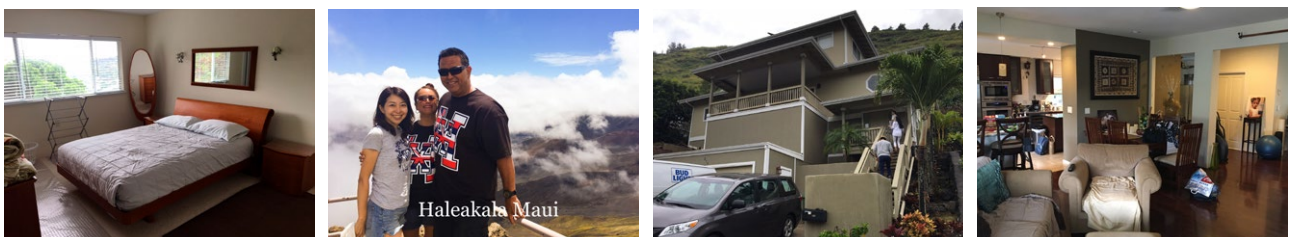
CPC can provide a safe and comfortable place to live while you are studying at our school. All student Condominium Residence (Shared Condo) or Homestay are in safe and convenient areas in Honolulu.

CONDOMINIUM RESIDENCE (SHARED CONDO)



It is located in the Ala Moana area. The building has 24 hour security with a security guard stationed in the lobby. The room includes a bed, desk, chair, lamps, and a private key for each room. The living room faces Ala Moana Beach Park where you can watch Hawaii's famous sunset everyday and fireworks every Friday.

HOMESTAY



The homestay experience is a unique accommodation choice for students because it welcomes them into an American home. Students who choose to live with a homestay family are looking for a safe, welcoming, and comfortable atmosphere in which they can be introduced to American customs, traditions, and family values.

* Housing Services are provided our partner company: Student Services America

For more information about our housing solutions, please contact the Student Service America (SSA) at:
Website: <http://ssahi.com> / Tel: (808) 542-9114 / E-mail: info@ssahi.com

CONTACT US

If you have any questions, please feel free to contact us anytime, we will be happy to help!

Central Pacific College

1585 Kapiolani Blvd. Suite 1705, Honolulu, HI 96714 (New location from January 2025)

Tel: (808) 791-7800 / Fax: 808-748-0897

Office hour: Mon - Fri 8:30am - 5:00pm

Email: info@cpchawaii.edu



FOLLOW US



FACEBOOK:
[@cpcenglish](https://www.facebook.com/cpcenglish)



INSTAGRAM:
[@centralpacificcollege](https://www.instagram.com/centralpacificcollege)



WEBSITE:
www.cpchawaii.edu



YOUTUBE
CPC YouTube Channel





LEARN THE
language
LIVE THE
dream.

Central Pacific College
1585 Kapiolani Blvd. Suite 1705,
Honolulu, HI 96714
(New location from January 2025)
Phone: (808) 791-7800
info@cpchawaii.edu

www.cpchawaii.edu